



# DUAL KEYBOARD STAND

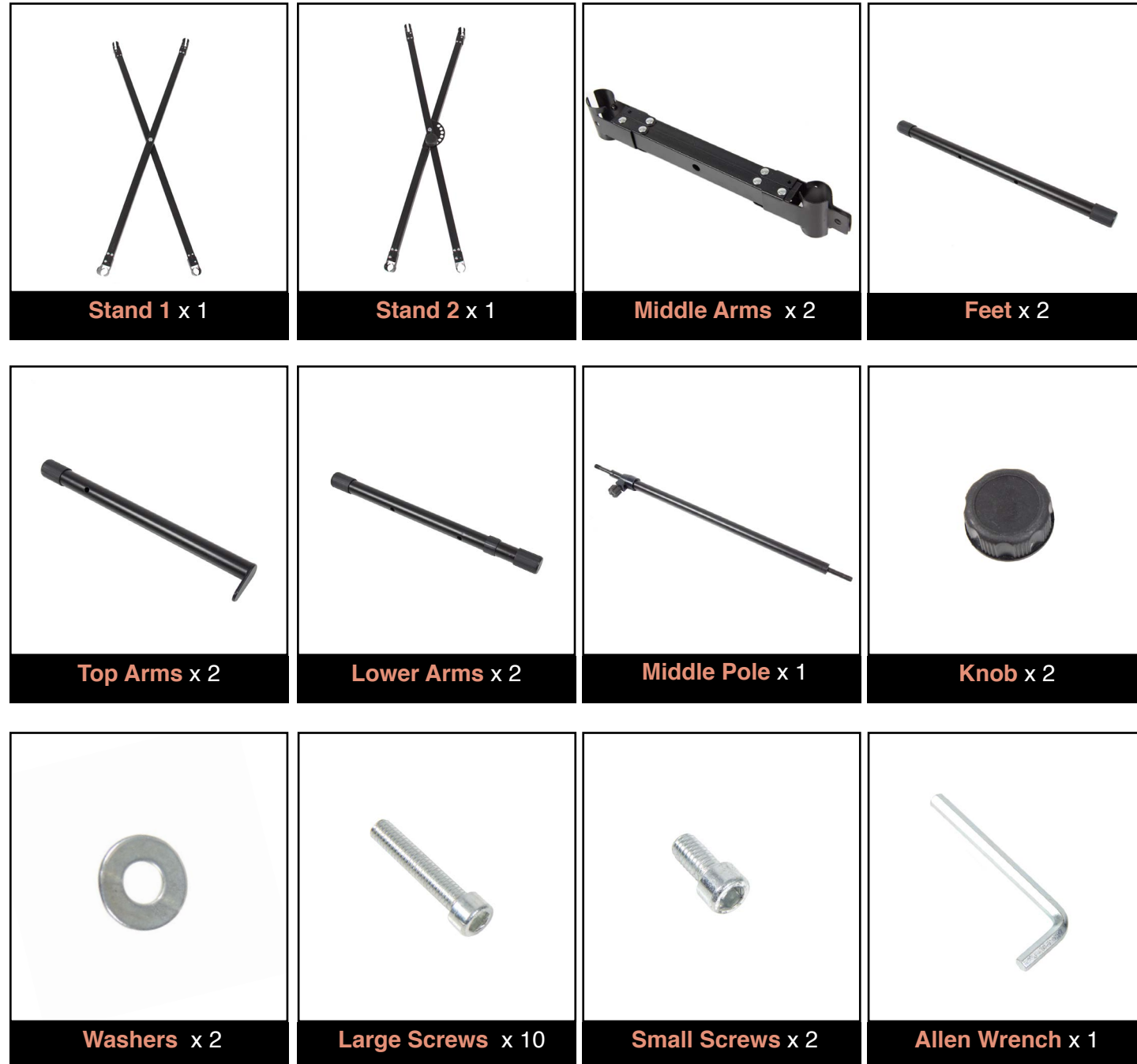
SKU# SKY1745



ASSEMBLY MANUAL

Revised August 2014

The parts and hardware below have been included for assembly:



**WARNING:**

Manufacturer and seller expressly disclaim any and all liability for personal injury, property damage or loss, whether direct, indirect, or incidental, resulting from the incorrect attachment, improper use, inadequate maintenance, or neglect of this product.



- 1 Take X Stand 1 and attach it to the feet using two Large Screws & Allen Wrench.
  - Make sure adjustment knob is facing outwards.
  - Adjust to desired width before proceeding to Step 2.



- 2 Take X Stand 2 and attach using two Large Screws to the remaining holes in the feet.



- 3 Attach two Lower Arms to either side of the X Stands using 4 large screws as shown.



- 4 Next, attach two Middle Arms to both sides of the Lower Arms using 2 Small Screws.



5 Slide the Middle Pole in between the two Middle Arms in the appropriate holes and screw on 2 Knobs on each side with a Washer on each side.



6 Lastly, attach the 2 Top Arms to each sides of the Middle Arms, and tighten with 2 Large Screws.  
• Make sure end tabs are facing upward.

..... *Call Us!* .....

WE'RE HERE 7 DAYS A WEEK TO HELP YOU!

**(909)-948-8400**

.....  
MONDAY-FRIDAY 5:00AM-5:30PM PST  
SATURDAY AND SUNDAY 7:00AM-3:30PM PST