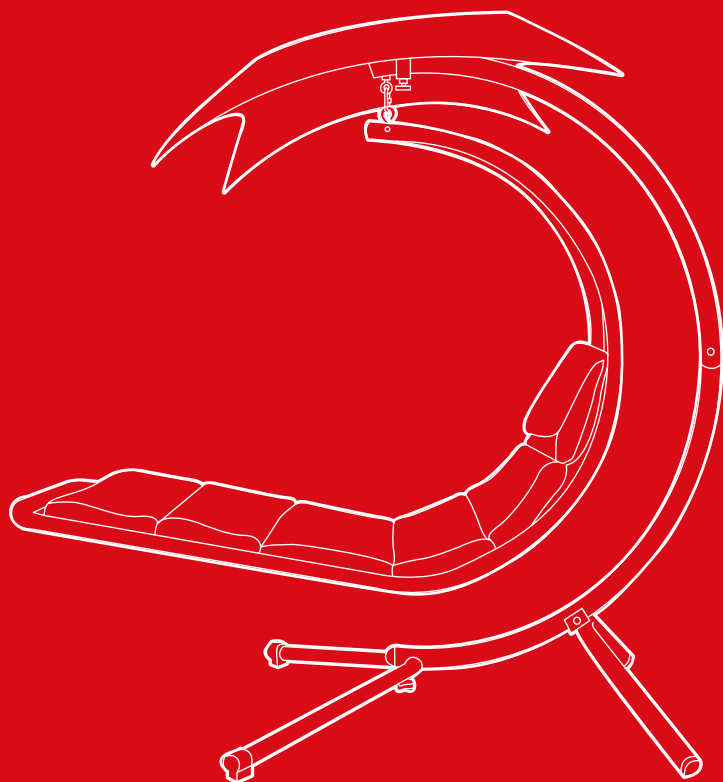




bestchoiceproducts



# INSTRUCTION MANUAL

---

Hanging Chaise Lounge Chair

## TOOLS REQUIRED

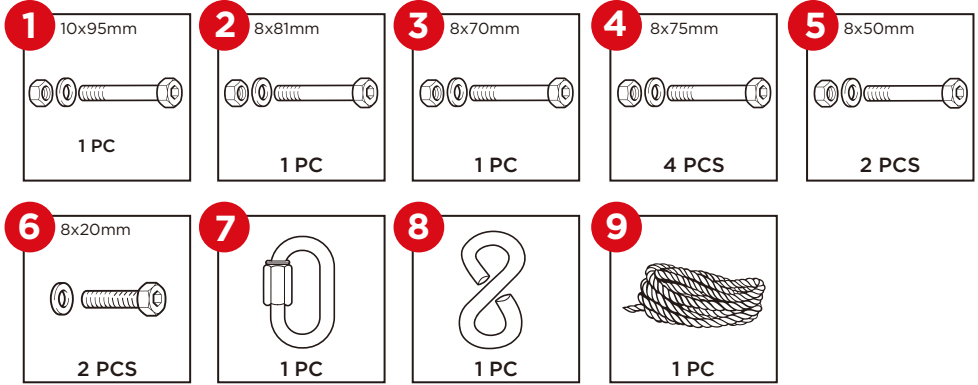


2 PERSON  
ASSEMBLY

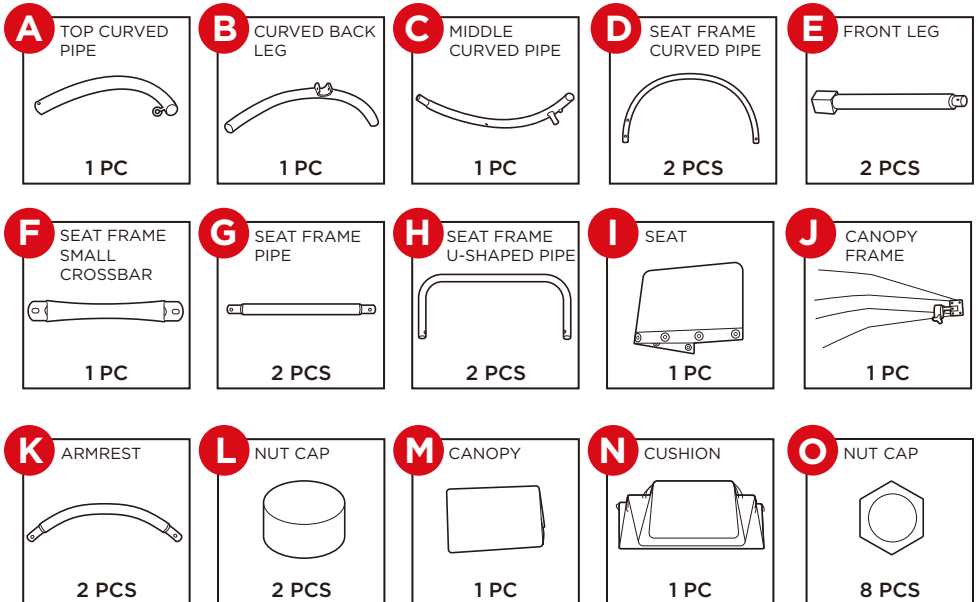


APPROXIMATELY  
1 HOUR  
ASSEMBLY

## HARDWARE



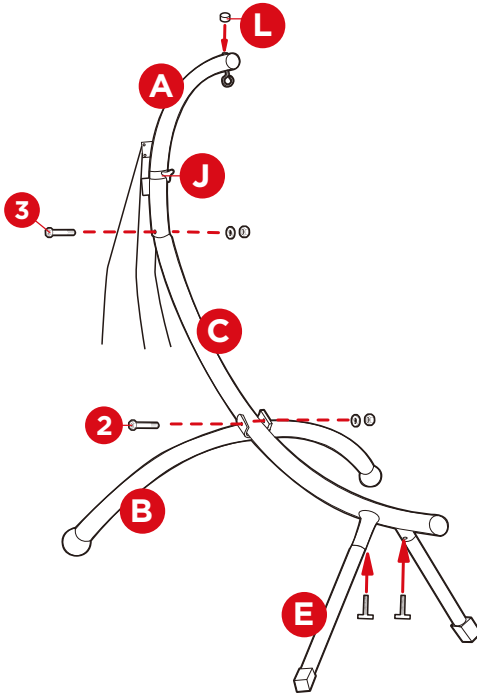
## PARTS



# PRODUCT ASSEMBLY

Please retain these instructions for future reference.

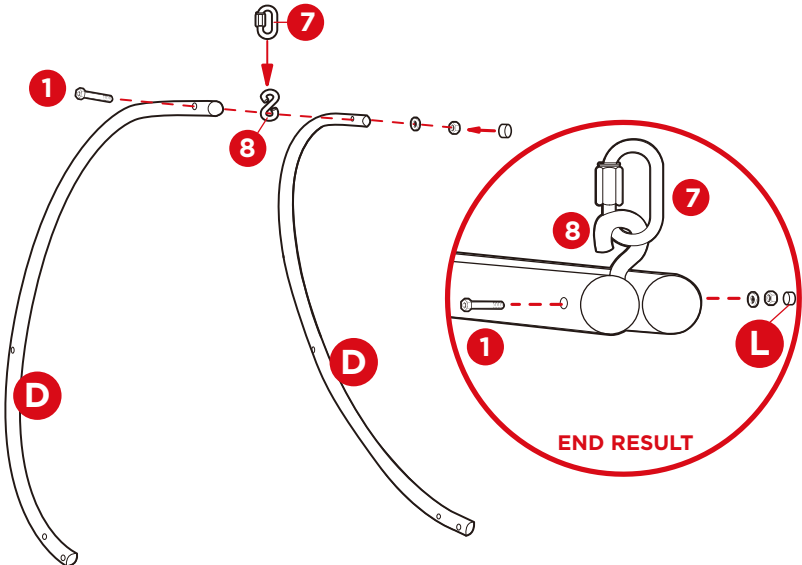
## 1



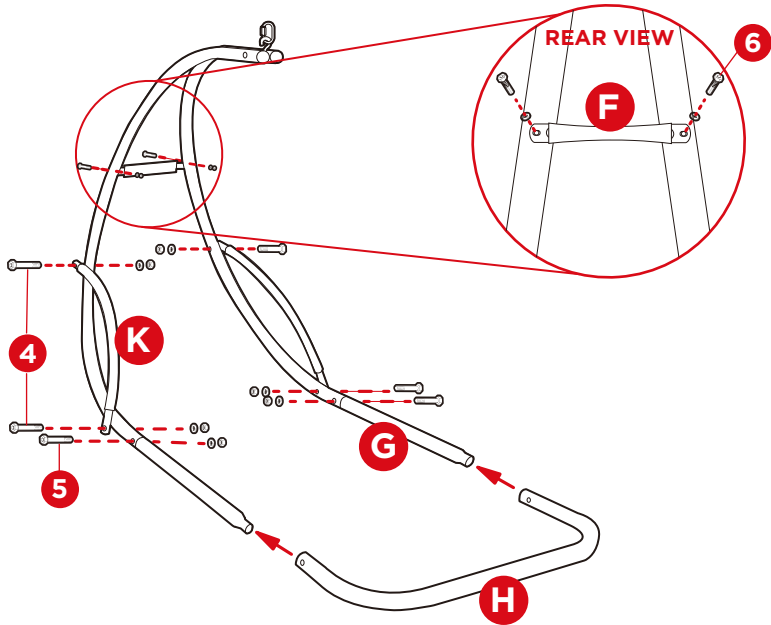
Attach the Part E legs with the knobs provided on the legs.

Assemble the outer frame. Slide on the part J canopy frame before connecting part A to part C.

## 2



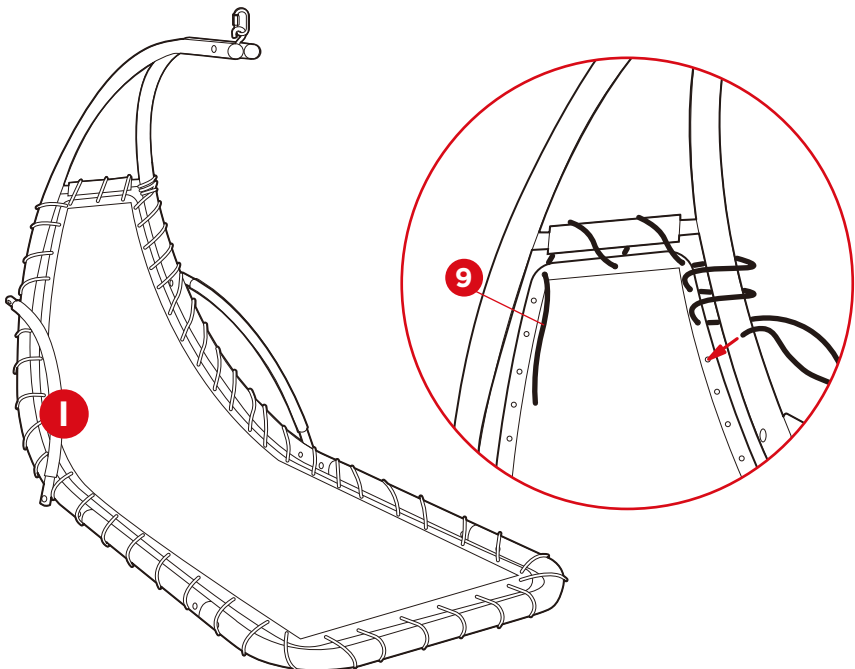
Place part 8 between the two part D seat frame curved pipes and secure with the part 1 bolt set. Hook part 7 to part 8 as shown. Place a part L nut cap over the exposed nut.

**3**

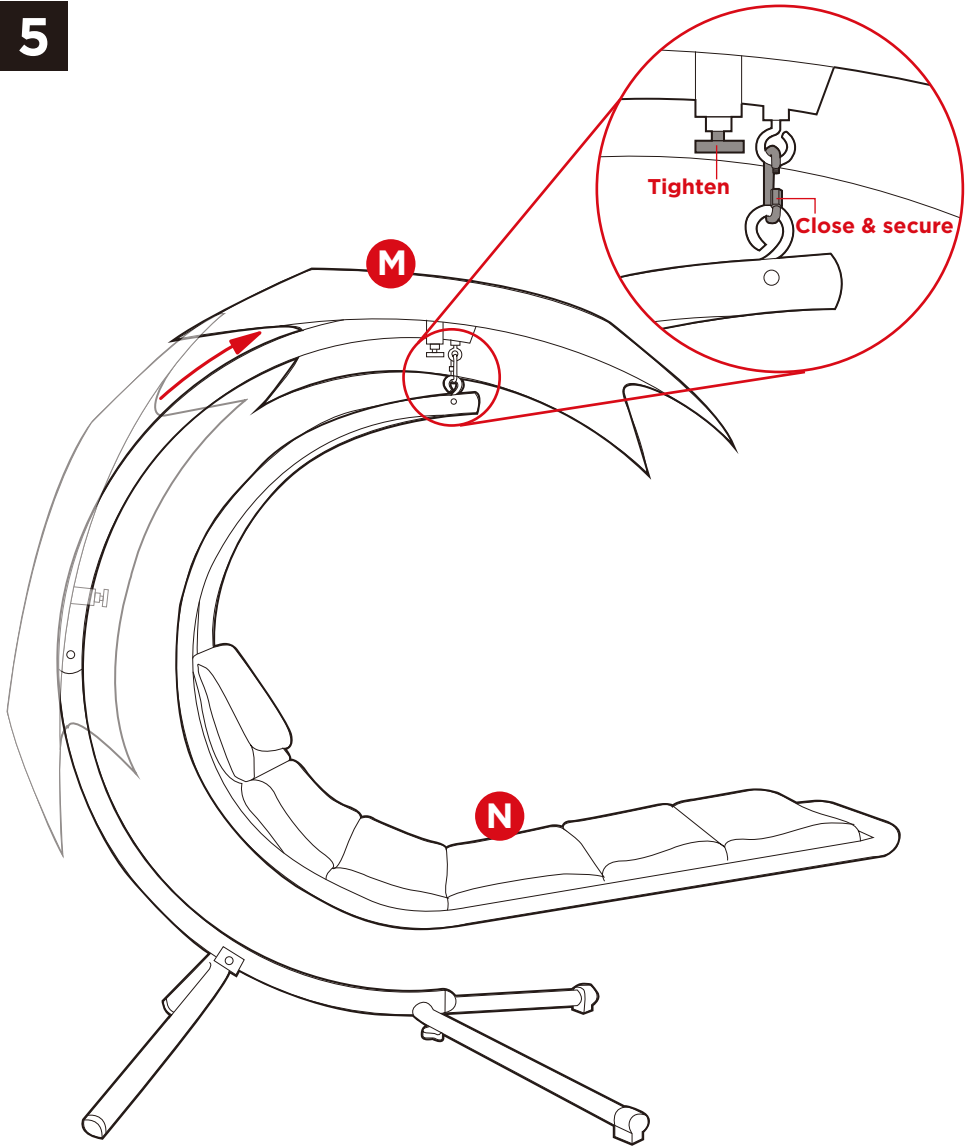
Assemble the seat frame.

**4**

Lay the part I seat inside the seat frame. Using the part 9 rope, tie a firm knot joining the frame and seat together. Continue weaving the rope in and out until the entire seat is attached, making sure the rope is pulled tight and snug. Tie several firm knots to secure the seat.



5



Secure the part M canopy onto the part J canopy frame. Use the carabiner to hang the seat frame from the outer frame. Tie the part N cushion to the seat frame. Place a part O nut cap on every exposed nut.

**WARNING**

To prevent potential injury, please **DO NOT** enter from the front of the seat; enter from the side.

## NOTICE

The logo for Best Choice Products (BCP) consists of the lowercase letters "bcp" in a white, lowercase, sans-serif font, enclosed within a red square border.

- Do not stand on or use any part of this product as a step ladder.
- Firmly secure all bolts, screws and knobs before use.
- Reconfirm that all bolts, screws, and knobs are secure every 90 days.
- Do not use or store this item in the proximity of open flame or flammable/combustible chemicals.
- If any parts are missing, broken, damaged, or worn, stop using this product until repairs are made and/or factory replacement parts are installed.
- Do not use this item in a way inconsistent with the manufacturer's instructions as this could void the product warranty.

## PRODUCT WARRANTY INFORMATION

All items can be returned for any reason within 60 days of the receipt and will receive a full refund as long as the item is returned in its original product packaging and all accessories from its original shipment are included. All returned items will receive a full refund back to the original payment method. All returned items will not be charged a re-stocking fee.

All returned items require an RA (Return Authorization) number, which can only be provided by a Best Choice Products Customer Service Representative when the return request is submitted. Items received without an RA may not be accepted or may increase your return processing time. Once an item has been received by Best Choice Products, refunds or replacements will be processed within 5 business days.

All returns must be shipped back to the Best Choice Products Return Center at the customer's expense. If the reason for return is a result of an error by Best Choice Products then Best Choice Products will provide a pre-paid shipping label via email. Boxes for return shipping will not be provided by Best Choice Products, and is the customer's responsibility to either use the original shipping boxes or purchase new boxes.

Pictures may be required for some returns to ensure an item is not damaged prior to its return. Items returned are not considered undamaged until they are received by Best Choice Products and verified as such. All damages to items are the customer's responsibility until the item has been received by and acknowledge by Best Choice Products as undamaged.

## CONTACT US; WE'RE HERE 7 DAYS A WEEK TO HELP YOU!



[bestchoiceproducts.com](http://bestchoiceproducts.com)



[customerservice@bestchoiceproducts.com](mailto:customerservice@bestchoiceproducts.com)



844.948.8400



[LEARN MORE!](#)

## WARNING

Manufacturer and seller expressly disclaim any and all liability for personal injury, property damage or loss, whether direct, indirect, or incidental, resulting from the incorrect attachment, improper use, inadequate maintenance, or neglect of this product.